

Solid State Lift Control Systems

Flat Plate Auto-Stop Kit

Installation & Operating Instructions

Over 25 years experience in the Marine Industry

RMC LIFT CONTROLS

Riding The Wave Of The Future



WARNING!

Read and follow all warnings and instructions in this manual to avoid personal injury or property damage.

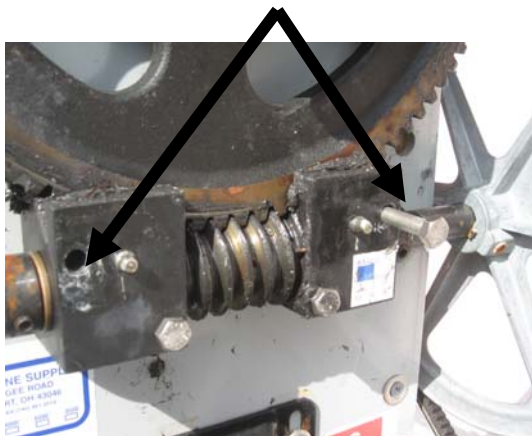
STEP 1.

Remove winch cover if equipped to expose the flat plate winch assembly



STEP 2.

Remove the (2) upper mounting bolts located adjacent to the grease fittings.



STEP 3.

Install flat plate on to winch, making sure fork on bracket engages the cross drilled bolt in the end of the drive shaft.



STEP 4.

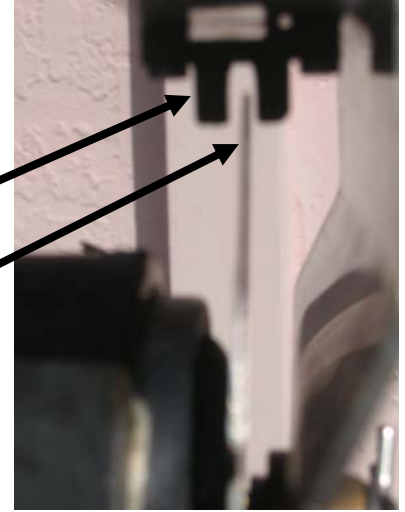
Install bolts removed in step 2..



STEP 5.

Prior to connecting the wiring for the Auto-Stop, run the lift up & down in the manual mode to ensure the chopper wheel is turning freely and is running in the center of the sensor. If not make any adjustments to the alignment to achieve this condition. Once this condition has been verified proceed to step 6.

Sensor
Chopper Wheel



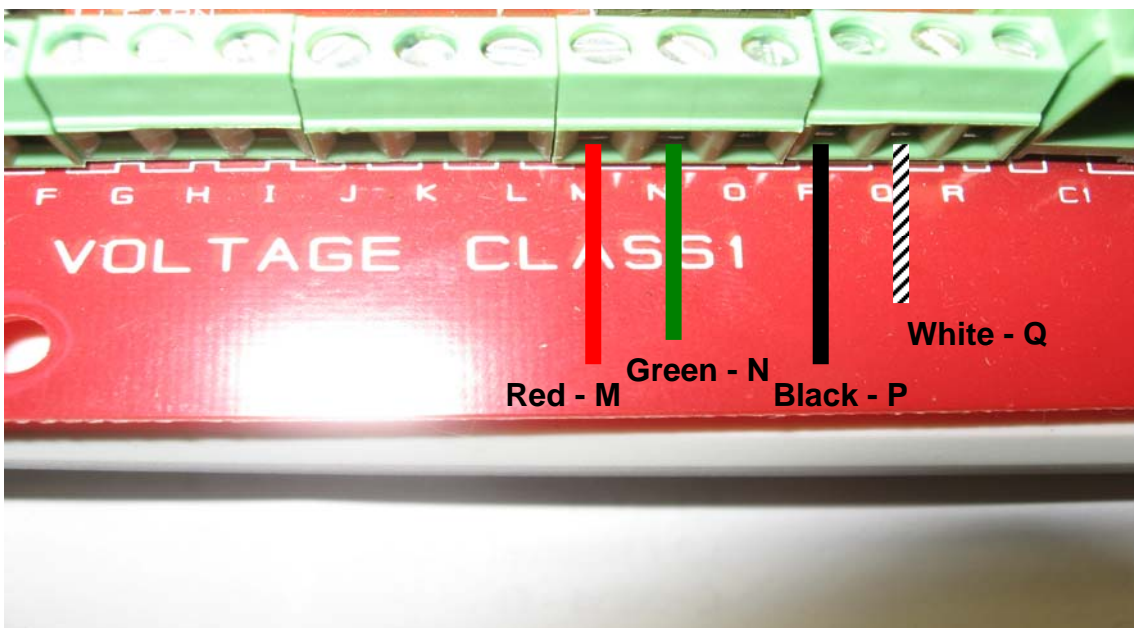
STEP 6.

Install cable gland in small knock out in bottom of enclosure

Remove Manual jumper installed between Low Voltage Terminals J & Q



Connect sensor wires to the Low Voltage Terminals in LCU as indicated below.



STEP 7.

- Turn off power to LCU and wait 30 seconds.
- Turn power on depress **stop** button and **hold**
- While holding the stop push the **up/down** toggle switch to the **up** position for 5 seconds. This clears the memory of the LCU.



Note: Anytime you need to reprogram the LCU or if you make a mistake while programming just start over by turning off the power for 30 seconds and clearing the memory.

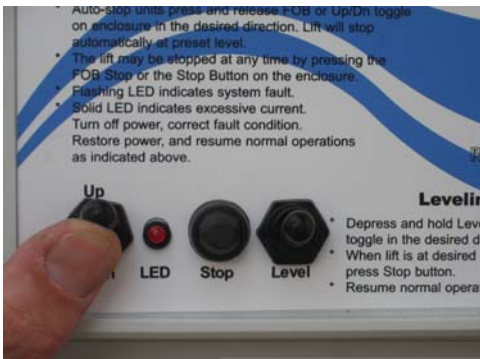
STEP 8.

- Press the **stop** button on the KeyFob,
- The **LED** will light up, indicating your are in program mode.



STEP 9.

- Using the manual **up** toggle run the lift to the desired up stop position. (Usually this is the maximum desired storage height)
- As soon as the up toggle is activated the LED will go out.
- When the desired position is reached press the **up** button on the **Key-Fob**, this will lock in the position for up
- The **LED** will light up again.



STEP 10.

- Using the manual **down** toggle run the lift to the desired lower stop position. (Usually this is the lowest level required to float the vessel at a low tide condition)
- As soon as the **down** toggle is activated the LED will go out.
- When the desired position is reached press the **down** button on the **Key-Fob**, this will lock in the position for down.



Operation:

- Once the lift is programmed it will run without stopping between the programmed up & down limit positions.
- The lift can be stopped at any position between the stops with the use of the stop button of the KeyFob or the enclosure.
- Starting the lift from any position will result in the lift running to the programmed position in the direction selected.
- USING LEVEL FUNCTION IN AUTO MODE:** To level the lift in automatic mode, hold **level** switch down
- While **holding** the level switch press the manual up or down toggle to direction required to level lift.
- Only one motor will start and run.** When lift is leveled press the **stop** button.
- When the lift has **STOPPED** release the level switch.
- CLOSING LEVEL SWITCH WITH LIFT RUNNING WILL RESULT IN DAMAGE TO YOUR UNIT.**



If technical assistance is required
please call 239-289-4150 or email
rmcontrols@embarqmail.com